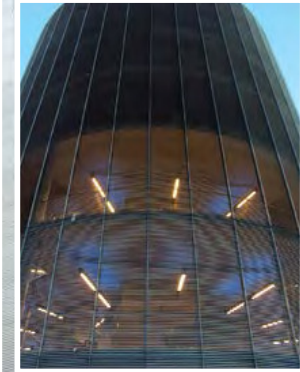
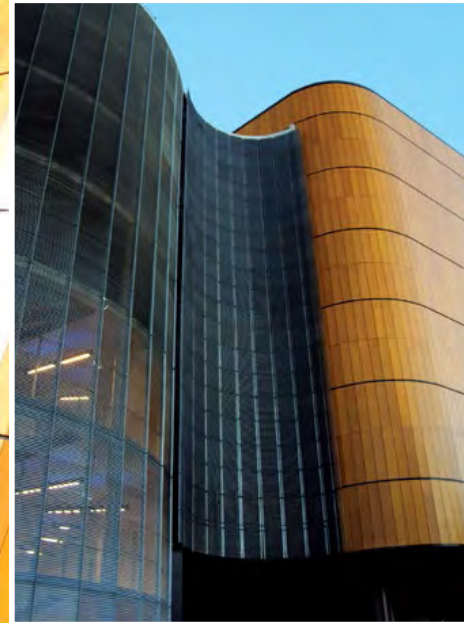


Top Image The TOH area of the Royal Randwick Racecourse.



Below Aambianz were responsible for the architectural louvres on the external staircase that becomes a major design element of the façade at Royal Randwick Racecourse.



One of the most distinctive features of the new QEII stand at Royal Randwick Racecourse is the two drum-like cylindrical stairwell structures which Aambianz helped make possible. Aambianz designed, engineered, manufactured and installed all the architectural louvres which form a major part of the stairwell facade, working closely with the architects on the design.

“We tend to work with architects at the design stage. Our engineering skills give them freedom to think as we are able to engineer solutions which achieve their design goal,” explained Aambianz Director, John Joseph. “Builders also like to work with us because we do not charge a premium to install our products – we provide an end-to-end solution.”

The company also manufactured and installed the anodized aluminium swaged blade louvers for the link area, owners pavilion and plant rooms, a total of around 4000m<sup>2</sup> of facade. “Since the stairwell louvers were installed to a curved surface, the design and implementation was critical for the success of the project. We provided a complete solution, including the structural steel for installation, and the engineering planning of how to install them,” said John.

Aambianz was established in 2004 by a group of engineers and facade designers and has grown to a company employing 40 staff across

engineering, design, manufacturing, installation and project management. The company’s capabilities include aluminium architectural, acoustic and ventilation louvers; fixed, operable and motorised sunshades; perforated and laser-cut aluminium panels; and custom-made sun-control systems.

Aambianz are members of the Green Building Council of Australia, and their products are designed to provide sustainability benefits by reducing power consumption for cooling through shading and ventilation.

Every project they undertake is a customised solution, with 3D modelling used during the design process to enable meshing of their engineered designs with the architectural plans. They can design for and produce any visual finish, as shown at Penrith Commuter Carpark, where the louvers reflect the colours and patterns of leaves.

Currently, Aambianz is working on fixed facade louvers and feature louvers for the Charles Perkins Centre at the University of Sydney; facade and plant room louvers for Canberra Airport; Rooty Hill RSL; and Next DC Data Centre.

For more information contact Aambianz Pty Ltd, 5/16 York Road, Ingleburn NSW 2167 5 Archimedes Street, Darra QLD 4076, phone 1300 88 3011, email [info@aambianz.com.au](mailto:info@aambianz.com.au)