



# AWAZ™ series

**Structural Aluminium Fabrication**  
**Engineered to achieve maximum sound attenuation**  
**Aesthetic extruded Aluminium blades**  
**Bradford™ FiberTex S350. Bio**



## AWAZ Series

### ACOUSTIC LOUVRE SYSTEM

**AWAZ Series** Acoustic Louvres are engineered to achieve maximum sound attenuation while maintaining architectural aesthetics. The extruded aluminium blades are available in anodised, powder coated or painted finish.

The **AWAZ** comes completely engineered with Ambianz proprietary mullion systems / framing systems and can be used in a variety of applications not limited to plant rooms screening / privacy screening / architectural screening. The system is complete with engineered aluminium sills, channels, bird / vermin mesh and framings.

Ambianz **AWAZ** Series has been comprehensively tested to the Australian standards and these results can be made available on request.

All Ambianz products are engineered to Australian standards and adapted to project design requirements.

#### Blade Profile:

- AWAZ 150
- AWAZ 300
- AWAZ 300S
- AWAZ 600

#### Material Blade:

- Architectural grade
- Structural Grade

## Acoustic Performance:

Acoustic Performance									
Model		Octave Band Centre Frequency (Hz)							
		63	125	250	500	1k	2k	4k	8k
AWAZ 150	NR	12	12	15	18	20	22	18	17
	STL	6	6	9	12	14	16	12	11
AWAZ 300	NR	15	19	16	20	27	25	24	25
	STL	9	13	10	14	21	19	18	19
AWAZ 300S	NR	14	18	18	24	31	36	35	36
	STL	8	12	12	18	25	30	29	30
AWAZ 600	NR	15	23	21	25	37	40	39	43
	STL	9	17	15	19	31	34	33	37
NR: NOISE REDUCTION STL: SOUND TRANSMISSION LOSS									



## Finish:

- **Mill Finish**
- **Powder Coat:**
  - Dulux: Precious, Electro, Duralloy, Alphatec, Dretec, Fluoraset, other.
  - Interpon: D100, D2015 Ultriva, D3020 Fluoromax, other
- **Anodising:**
  - Australian Aluminium Finishing
  - EverShield High Grade Anodising, EverShield Coastal, EverShield External, EverShield Internal
  - Universal
- Please specify colour, thickness  $\mu$

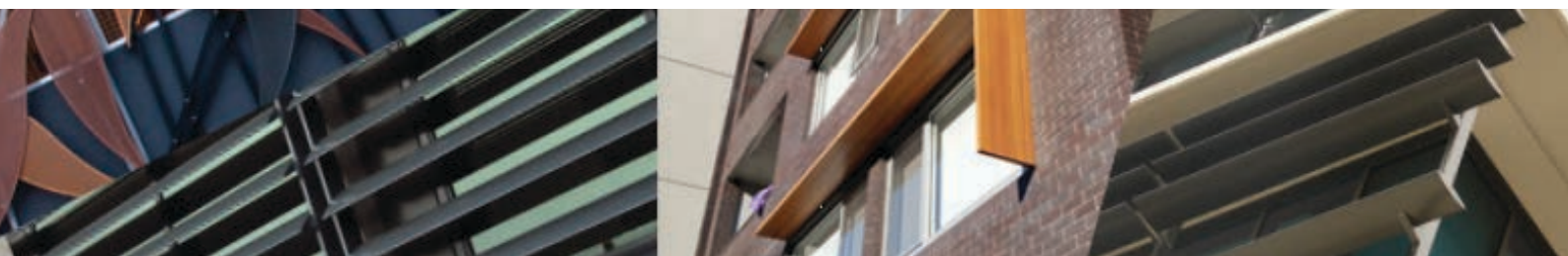
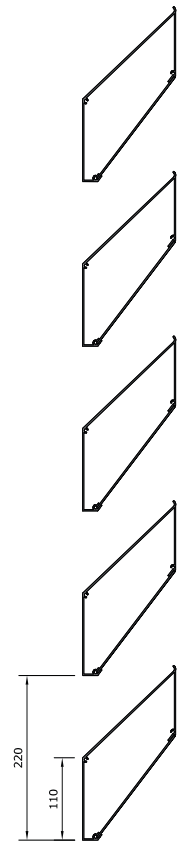
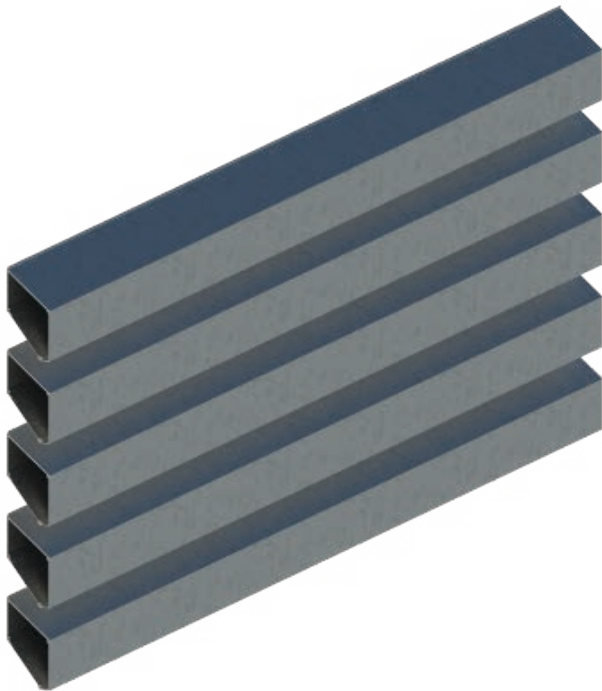
## Accessories

- **Bird Wire:**
  - Galvanised
  - Stainless Steel: (SS304), (SS316), (SS304)
  - Nylon
  - UPVC coated
- **Louvre Doors**
- **Hardwares**

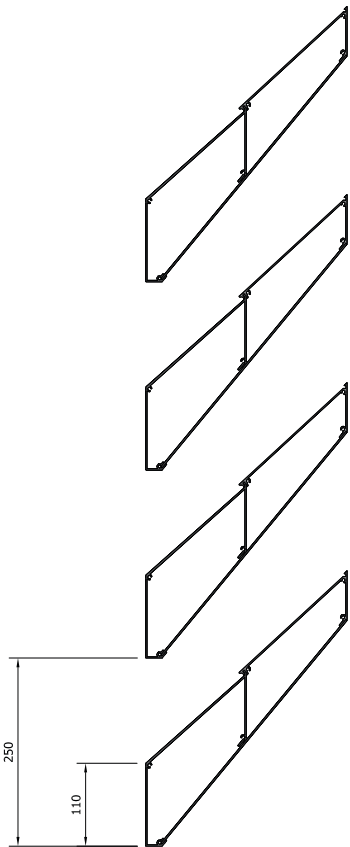
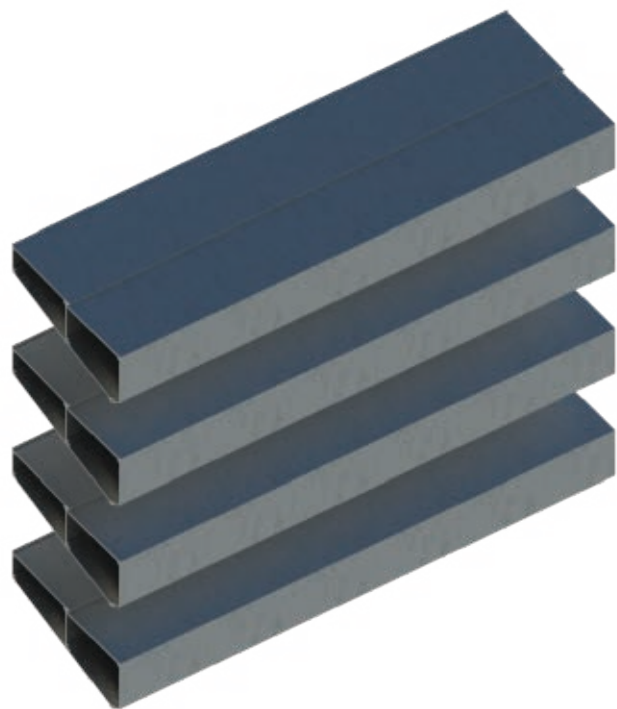
## Material Blade:

- Architectural grade
- Structural Grade

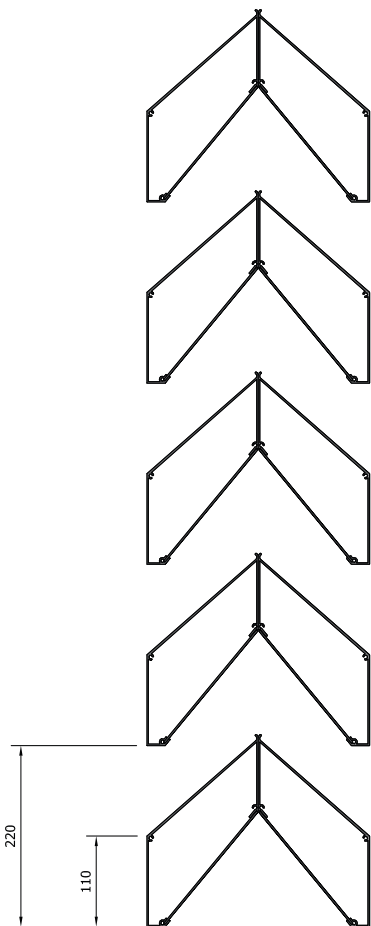
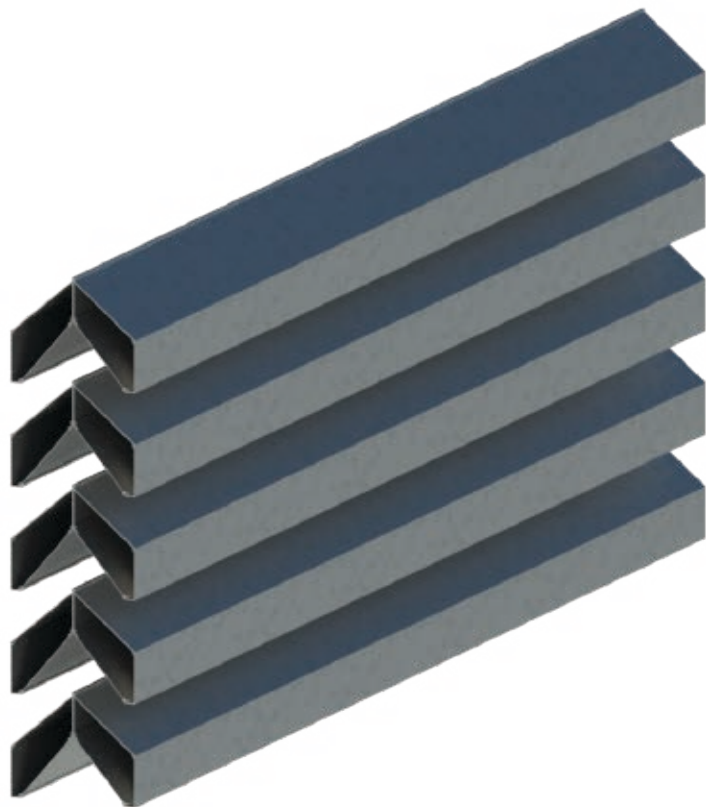
## AWAZ™ Series - 150



AWAZ™ Series - 300



AWAZ™ Series - 300S





AWAZ™ Series - 600

