



# EDUCATION PROJECTS

We believe every building has  
a right to look beautiful with an  
engineered aesthetic facade,  
while remaining sustainable  
& guaranteeing safety.

---

"BEAUTIFUL BUILDINGS  
TRANSFORM CITIES"

---



## COMPANY OVERVIEW

Aambianz is a leading manufacturer and supplier of Aluminium facades, Louvres and Sunshades in Australia with offices and factories, Nationally and internationally. We are a professionally managed, dynamic and result oriented company specialising in providing solutions to the building industry in the facades segment. Key areas focused by the organisation include Solid Aluminium Cladding (SAM), Louvres, Sunshades, Perforated Screens, Privacy Screens, Solid Aluminium Panels, Architectural Fencing and custom fabricated Aluminium Facade elements.

## OUR HISTORY

Established in 2004, Aambianz is a dynamic result oriented Australian owned company specialising in design, planning and execution of external facade projects in the construction industry.

## OUR CAPABILITIES

In our state of the art 5500m2 production facilities in Sydney Australia, our capabilities include CNC Routers, CNC Turret Punches, CNC Brake Press and other aluminium and steel working equipment. We also have a division, specialising in Computer Aided Design and Building Information Modelling (BIM) and offer services to our clients in this area.

## OUR PHILOSOPHY

Our philosophy is to establish a long term professional business partnership with our customers, which is built upon our high quality services and products.

## OUR Factories:

- NSW: Sydney
- QLD: Brisbane
- VIC: Melbourne



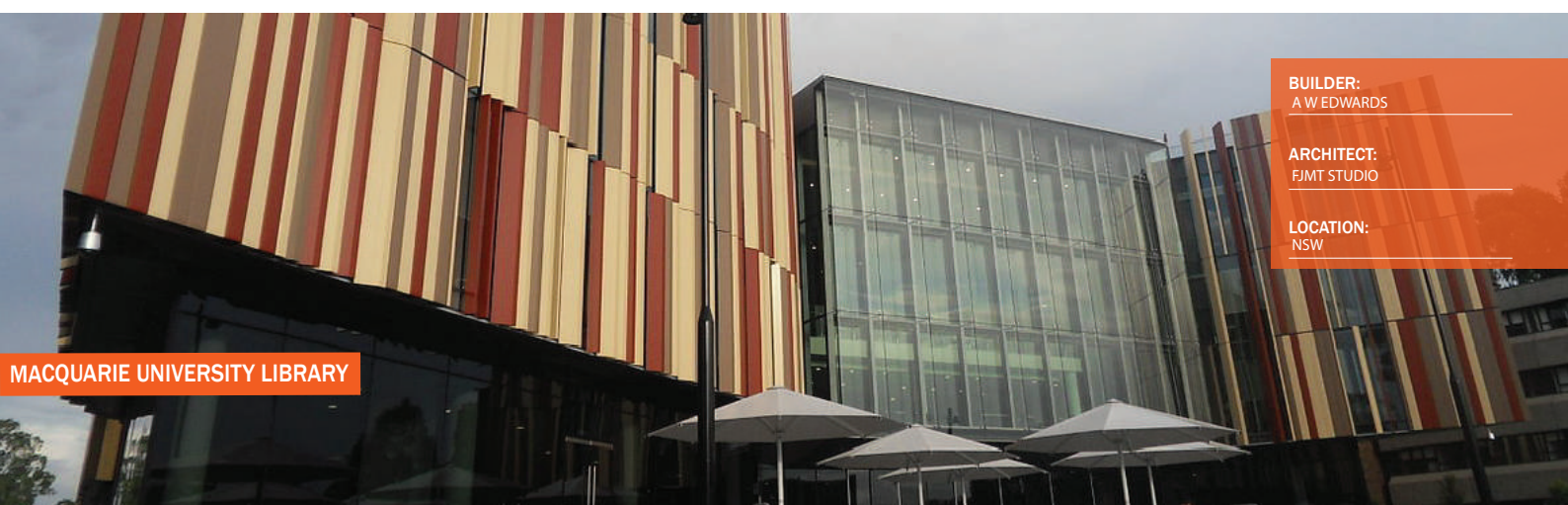
# WE HAVE DELIVERED...

# 50+

## Education Projects



PROJECT	STATE	BUILDER	ARCHITECT
UNSW Biological Sciences	NSW	Multiplex	Woods Bagot
University of Sydney - Sports Centre	NSW	Buildcorp	COX Architecture
University of Sydney - Abercrombie	NSW	John Holland	Kann Finch
University of Sydney - Admin Bldg F23	NSW	Lendlease	Grimshaw
UTS Central	NSW	Richard Crookes	FJMT Studio
Wahroonga Adventist School	NSW	Richard Crookes	Stanton Dahl Architects
Newington College	NSW	Watpac	BNMH Architects
St Ignatius College	NSW	Quasar	PMDL
University of Wollongong	NSW	Lipman	Edmiston Jones Arch
University of Western Sydney Bldg 17	NSW	ADCO	Baker Kavanagh Arch
SCEGGS Darlinghurst	NSW	Denham Const	Tanner Architects
Redlands School	NSW	Denham Const	Taylor Thomson Whitting
Robert Menzies College	NSW	Grindley	AJ + C
ANU SA6	ACT	Richard Crookes	Nettleton Tribe
Adelaide Botanic High School	SA	Lendlease	COX Architecture
Nazareth Catholic College	SA	Badge Const	Russell & Yelland Arch
Wahroonga Adventist School - Stg 3&5	NSW	HPAC	Stanton Dahl Architects



**BUILDER:**  
A W EDWARDS

**ARCHITECT:**  
FJMT STUDIO

**LOCATION:**  
NSW

MACQUARIE UNIVERSITY LIBRARY



WE PROVIDE

# AESTHETIC FACADE

TO TRANSFORM CITIES



GET IN TOUCH WITH US



Call  
US

02 96187450  
1300 88 30 11



VISIT  
US

[www.aambianz.com.au](http://www.aambianz.com.au)



Email  
US

[info@aambianz.com.au](mailto:info@aambianz.com.au)



## Our Offices:

Adelaide | Brisbane | Melbourne  
Sydney | Hyderabad (India)



green building council australia  
MEMBER 2019-2020



Master  
Builders  
Association  
MEMBER  
Member of the Master Builders Association of Australia